



SIMPLE & EFFECTIVE SECONDARY GUARDING



- Simple, mechanical system - no complexity
- Easy to service & maintain - no electronics
- Operator can override the system if needed
- Equipped as standard on new Snorkel booms

Snorkel Guard™ is a spring-loaded rail mounted above the platform controls, which stops machine operation when pressure is applied.

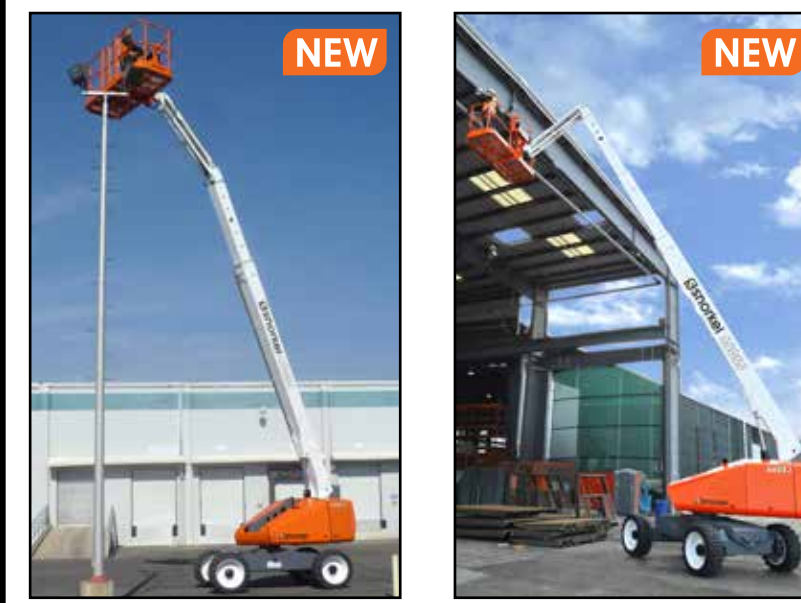
Now standard on all Snorkel booms with platform heights of 40ft (12.1m) and above. A retrofit kit is also available for most Snorkel booms in the field.



FOR MORE INFORMATION  
www.snorkellifts.com

TELESCOPIC BOOM LIFTS

Internal Combustion Rough Terrain



- Features:**
- Rugged all-terrain telescopic boom lifts, with optional oscillating axle
  - 4-wheel drive for excellent rough terrain performance
  - Available with and without a jib boom
  - Ideal for both construction and industrial applications

Specifications	400S	460SJ
Max. working height	46' (14.2m)	52' (16.0m)
Max. platform height	40' (12.2m)	46' (14.0m)
Max. horizontal reach	33' (10.1m)	40' (12.2m)
Stowed length	24' 10" (7.57m)	28' 5" (8.6m)
Overall width	8' (2.4m)	8' (2.4m)
Stowed height	7' 11" (2.4m)	7' 11" (2.4m)
Platform capacity	600 lbs (272kg)	600 lbs (272kg)
Inside turning radius	4' 6" (1.37m)	4' 6" (1.37m)
Gradeability	45%	45%
Weight	14,550 lbs (6,615kg)*	15,750 lbs (7,160kg)*

Specifications	600S	660SJ
Max. working height	66' 6" (20.4m)	72' 8" (22.3m)
Max. platform height	60' 6" (18.4m)	66' 8" (20.3m)
Max. horizontal reach	52' 2" (15.9m)	59' (18.0m)
Stowed length	30' 2" (9.2m)	34' 5" (10.4m)
Overall width	8' (2.4m)	8' (2.4m)
Stowed height	8' 4" (2.5m)	8' 4" (2.5m)
Platform capacity	600 lbs (272kg)	600 lbs (272kg)
Inside turning radius	5' 5" (1.65m)	5' 5" (1.65m)
Gradeability	45%	43%
Weight	23,500 lbs (10,659kg)*	27,283 lbs (12,376kg)*

\*Preliminary weight - confirm at time of ordering.

TELESCOPIC BOOM LIFTS

Internal Combustion Rough Terrain



- Features:**
- Powerful diesel powered telescopic boom lifts
  - Available with and without a jib boom
  - High torque 4-wheel drive system
  - Ideal for construction applications

Specifications	TB42	TB47J	TB60	TB66J
Max. working height	48' (14.8m)	53' (16.2m)	66' (20.3m)	72' (22.1m)
Max. platform height	42' (12.8m)	47' (14.2m)	60' (18.3m)	66' (20.1m)
Max. horizontal reach	33' (10.1m)	39' (11.9m)	49' 10" (15.2m)	56' (17.1m)
Stowed length	24' (7.3m)	26' 9" (8.2m)	30' 10" (9.4m)	32' 9" (10.0m)
Overall width	7' 11.5" (2.4m)	7' 11.5" (2.4m)	8' (2.4m)	8' (2.4m)
Stowed height	7' 9.5" (2.37m)	7' 9.5" (2.37m)	8' 10" (2.69m)	8' 9" (2.7m)
Platform capacity	500 lbs (227kg)	500 lbs (227kg)	500 lbs (227kg)	500 lbs (227kg)
Inside turning radius	13' 6" (4.11m)	13' 6" (4.11m)	15' 5" (5.8m)	15' 5" (5.8m)
Gradeability	25%	25%	30%	30%
Weight	11,600 lbs (5,262kg)	13,500 lbs (6,123kg)	21,731 lbs (9,857kg)	25,500 lbs (11,916kg)

Specifications	TB80	TB86J	TB120	TB126J
Max. working height	86' (26.4m)	92' (30.2m)	126' (38.6m)	132' (40.4m)
Max. platform height	80' (24.4m)	86' (26.2m)	120' (36.6m)	126' (38.4m)
Max. horizontal reach	71' 2" (21.7m)	78' 3" (23.9m)	62' (18.9m)	62' 11" (19.2m)
Stowed length	38' 8" (11.8m)	42' 3" (12.9m)	42' 3" (12.9m)	44' 9" (13.7m)
Overall width	8' 6" (2.6m)	8' 6" (2.6m)	8' 6" (2.6m)	8' 6" (2.6m)
Stowed height	9' 6" (2.9m)	9' 6" (2.9m)	9' 10" (3.0m)	10' 5" (3.2m)
Platform capacity	500 lbs (227kg)	500 lbs (227kg)	500 lbs (227kg)	500 lbs (227kg)
Inside turning radius	7' 10" (2.4m)	7' 10" (2.4m)	21' 2.4" (6.5m)	21' 2.4" (6.5m)
Gradeability	40%	40%	30%	30%
Weight	36,500 lbs (16,591kg)	38,000 lbs (17,273kg)	39,500 lbs (17,917kg)	42,150 lbs (19,119kg)

\*Preliminary weight - confirm at time of ordering.

TOWABLE BOOM LIFTS

Towable Boom Lifts



- Features:**
- Robust, reliable, and compact towable boom lifts
  - Quick and easy to set up and operate
  - Simple to service and maintain
  - Available with a range of power sources (gasoline, bi-energy, and battery electric)

Specifications	TL34	TL37J
Max. working height	39' 2" (12.1m)	41' 9" (12.9m)
Max. platform height	33' 2" (10.1m)	35' 9" (10.9m)
Max. horizontal reach	14' 1" (4.3m)	18' 5" (5.6m)
Towing width	5' 3" (1.59m)	5' 3" (1.59m)
Towing length	17' (5.2m)	20' 11" (6.4m)
Stowed height	7' 3" (2.2m)	6' 11" (2.12m)
Outrigger footprint	11' 9" x 11' 9" (3.6m x 3.6m)	12' 9" x 10' 10" (3.9m x 3.3m)
Superstructure Rotation	360° (non-continuous)	640° (non-continuous)
Platform capacity	475 lbs (215kg)	475 lbs (215kg)
Weight	2,904 lbs (1,320kg)	3,498 lbs (1,480kg)

Specifications	TL39	TL49J
Max. working height	43' 9" (13.5m)	54' 1" (16.6m)
Max. platform height	37' 9" (11.5m)	48' 1" (14.6m)
Max. horizontal reach	21' (6.4m)	27' 10" (8.5m)
Towing width	5' 3" (1.66m)	5' 8" (1.75m)
Towing length	15' 5" (4.7m)	23' 3" (7.1m)
Stowed height	6' 7" (2.07m)	7' 2" (2.19m)
Outrigger footprint	13' 1" x 11' 10" (4.0m x 3.8m)	15' 9" x 15' 5" (4.8m x 4.7m)
Superstructure Rotation	540° (non-continuous)	680° (non-continuous)
Platform capacity	475 lbs (215kg)	425 lbs (200kg)
Weight	3,263 lbs (1,480kg)	5,269 lbs (2,395kg)

ACCESSORY PACKAGES

Accessory Package Model Availability

Model	Aircraft Package	Deluxe Aircraft Package	Cold Weather Package	Extreme Cold Weather Package	Lights Package	Extreme Environment Package	Glazier Package	Tow Kit	12k Generator Package	12k Generator/Welder Package
<b>Telescopic Booms</b>										
400S	X	X	X	X	X	X	X	X	X	X
460SJ	X	X	X	X	X	X	X	X	X	X
600S	X	X	X	X	X	X	X	X	X	X
660SJ	X	X	X	X	X	X	X	X	X	X
TB42	-	-	X	X	X	X	X	X	X	X
TB47J	-	-	X	X	X	X	X	X	X	X
TB60	-	-	X	X	X	X	X	X	X	X
TB66J	-	-	X	X	X	X	X	X	X	X
TB80	-	-	X	X	X	X	X	X	X	X
TB86J	-	-	X	X	X	X	X	X	X	X
TB120	-	-	X	X	X	X	X	X	X	X
TB126J	-	-	X	X	X	X	X	X	X	X
<b>Articulated Booms</b>										
A46JE	X	X	-	-	-	-	-	-	-	-
A46JRT	X	X	X	X	X	-	-	-	-	-
AB60J	X	X	X	X	X	X	X	-	-	-
AB80J	X	X	X	X	X	X	X	X	X	X
AB85J	X	X	X	X	X	X	X	X	X	X

Accessory Package Details

- Aircraft Package**

  - Bumpguard system
  - Tow kit
  - Swing gate
  - Fall arrest protection
- Deluxe Aircraft Package**

  - Aircraft package *plus*
  - Enhanced padded bumpguard

ACCESSORY PACKAGES

Accessory Package Details

- Cold Weather Package**

  - Block heater
  - Hydraulic warm-up kit
- Extreme Cold Weather Package**

  - Cold Weather package *plus*
  - Battery blanket
  - Synthetic oil
- Lights Package**

  - Platform lights
  - Control panel
  - Driving headlights
- Extreme Environment Package**

  - Sandblast protection kit
  - Boom wiper seals
  - Platform control box cover
- Glazier Package**

  - Two trays with keeper pins
  - Platform rail padding
  - Straps with protectors
  - Storage box
- Tow Kit**

  - Tow bar
  - Float valve
  - Chain
  - Steering link

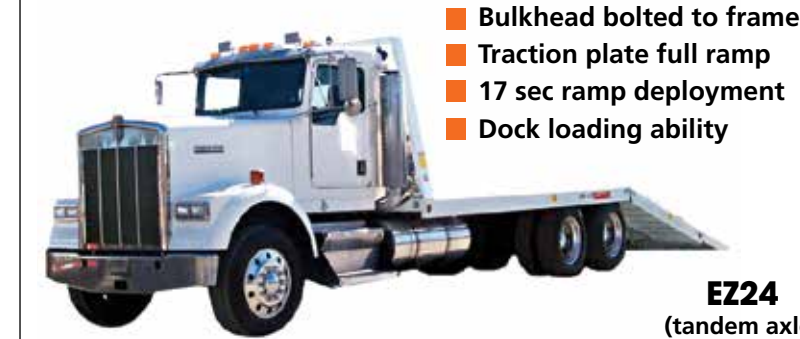
- 10k/12k Generator Package**

  - 30A 208VAC 3-ph, 60Hz outlet
  - 15A 208VAC 3-ph, 60Hz outlet
  - 15A 120VAC 1-ph 60Hz outlet
  - Platform welder bracket.
  - Hydraulic oil cooler (below 50°)
- 12k Generator/Welder Package**

  - Lincoln V275-5 welder
  - Hydraulic 208VAC 3-ph generator

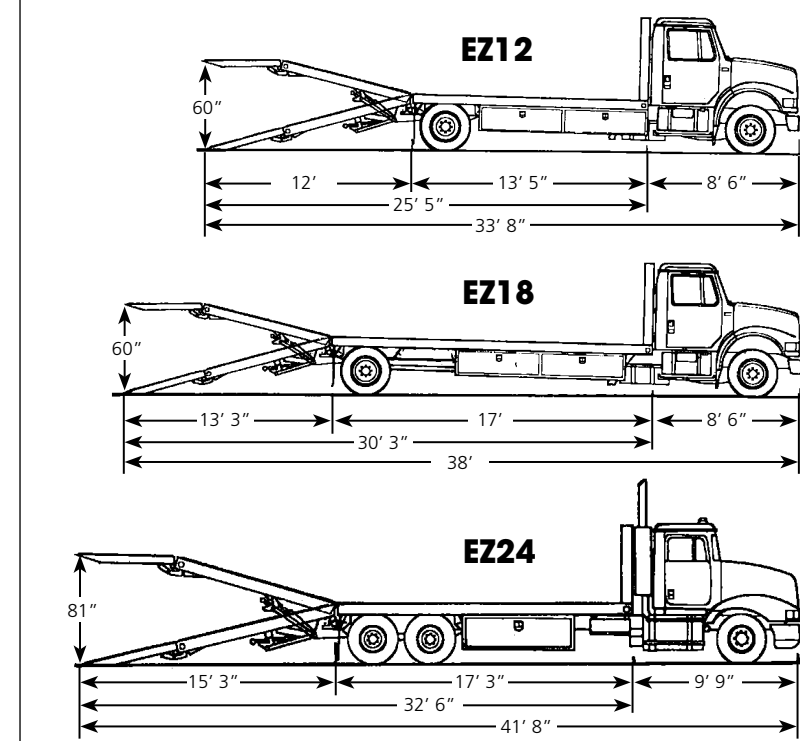
EZ LOADER

EZ Loader Custom Delivery Truck Beds



- Bulkhead bolted to frame
- Traction plate full ramp
- 17 sec ramp deployment
- Dock loading ability

DIMENSIONS AND SPECIFICATIONS



	EZ12	EZ18	EZ24
<b>Capacities</b>			(tandem axle)
Bed Capacity	12,000 lbs (5,443kg)	18,000 lbs (8,165kg)	24,000 lbs (10,886kg)
Dove Tail Load Capacity	8,000 lbs (3,628kg)	10,000 lbs (4,535kg)	15,000 lbs (6,803kg)
Tow Capacity	5,000 lbs (2,267kg)	5,000 lbs (2,267kg)	10,000 lbs (4,535kg)
Approximate G.V.W.	26,000 lbs (11,793kg)	33,000 lbs (14,968kg)	48,000 lbs (21,772kg)
Hydraulic Pump P.T.O.	14 GPM (53 LPM)	14 GPM (53 LPM)	14 GPM (53 LPM)
<b>Dimensions</b>			
Overall Bed W/L	8'6" (2.6m) W x 21'3" (6.4m) L	8'6" (2.6m) W x 25'3" (7.6m) L	8'6" (2.6m) W x 27'6" (8.3m) L
Main Bed W/L	8'6" (2.6m) W x 13'5" (4.1m) L	8'6" (2.6m) W x 17' (5.1m) L	8'6" (2.6m) W x 17'3" (5.2m) L
Dove Tail W/L	8'6" (2.6m) W x 7'5" (2.2m) L	8'6" (2.6m) W x 8' (2.4m) L	8'6" (2.6m) W x 10' (3m) L
Flip Tail W/L	8'6" (2.6m) W x 4'7" (1.4m) L	8'6" (2.6m) W x 5'3" (1.6m) L	8'6" (2.6m) W x 5'3" (1.6m) L
Bulk Head Height	60" (1.52m)	60" (1.52m)	60" (1.52m)
Cab to Axle Length	138" (3.5m)	185" (4.7m)	164" (4.1m)
Ramp Length	11'11" (3.6m)	13'4" (4.06m)	14'9" (4.5m)
Bed Height	41" (1.04m)	46" (1.16m)	48" (1.22m)
Max Dock Height	65" (1.65m)	66" (1.67m)	75" (1.9m)
Ramp Degree/%	18/32%	18/32%	15/27%
Hitch Receiver Tube	2" (50.8mm)	2" (50.8mm)	2" (50.8mm)
Wood Thickness	1" (25.4mm)	1" (25.4mm)	1" (25.4mm)
Warranty (Bed Only)	1 Year All Components / 3 Year Structural		

Note: Dimensions may change depending on truck manufacturer and model.



FOR MORE INFORMATION  
www.snorkellifts.com

Specifications subject to change without notice. Photos and diagrams in this brochure are for promotional purposes only. Refer to appropriate Snorkel operators manual for detailed instructions on the proper use and maintenance.

MF0116

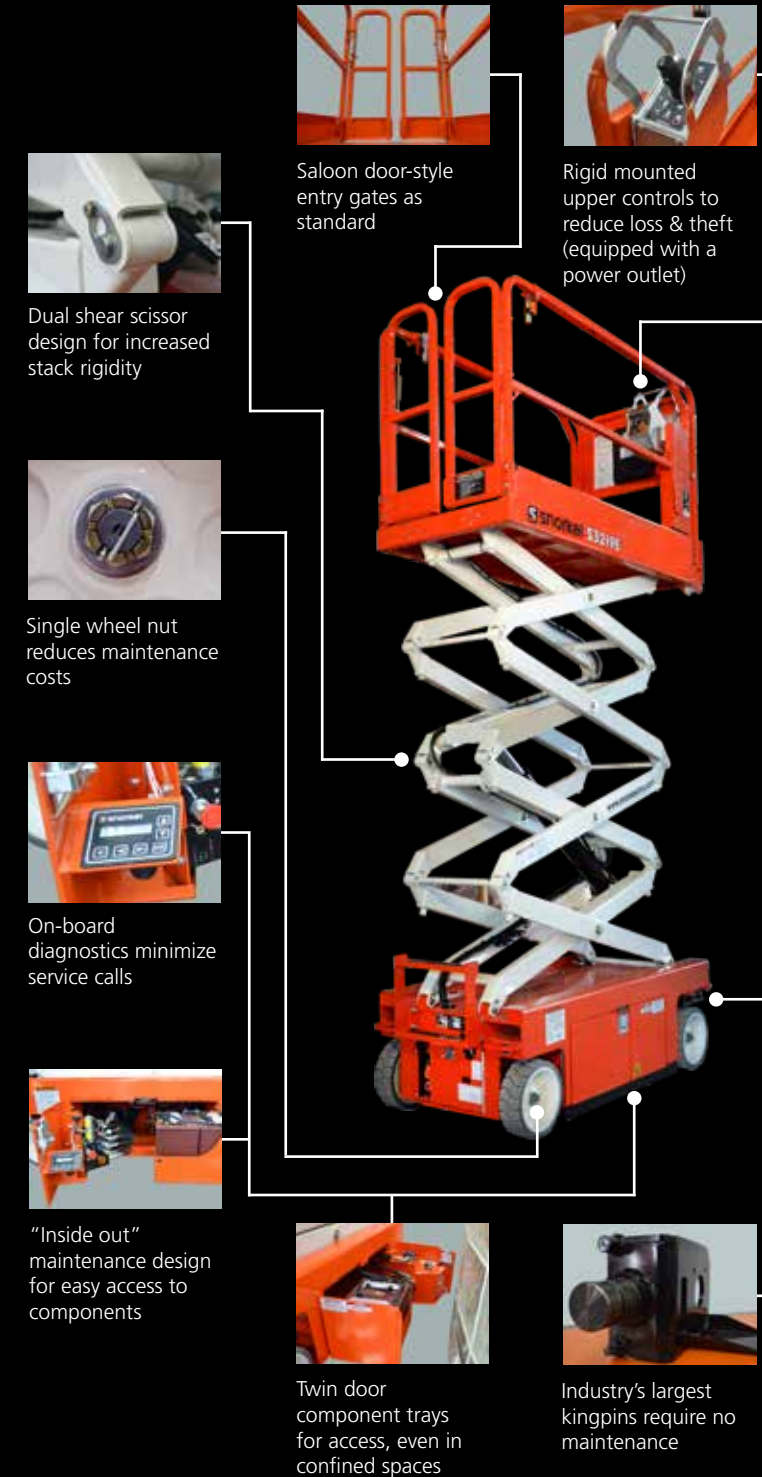
www.snorkellifts.com





## NEW ELECTRIC SLAB SCISSOR LIFTS

- Designed by a rental guy and built to last
- Packed with innovative features that deliver low total ownership costs



## SCISSOR LIFTS

### Push Around & Self-Propelled Mini Lifts



S3008P

S3010E

#### Features:

- Lightweight push around and self-propelled mini scissor lifts
- Easily passes through a standard doorway
- Durable design for tough site conditions
- Proven productivity benefits over traditional low level access products

Specifications	S3006P	S3008P	S3010P
Max. working height	12' 6" (4.0m)	14' 2" (4.5m)	15' 10" (5.0m)
Max. platform height	6' 6" (2.0m)	8' 2" (2.5m)	9' 10" (3.0m)
Overall length	3' 11" (1.2m)	3' 11" (1.2m)	3' 11" (1.2m)
Overall width	2' 3" (0.75m)	2' 3" (0.75m)	2' 3" (0.75m)
Stowed height	5' 6" (1.7m)	5' 10" (1.8m)	5' 10" (1.8m)
Platform capacity	529 lbs (240kg)	500 lbs (227kg)	430 lbs (195kg)
Max. wind speed	0m/s	0m/s	0m/s
Raise/lower time	8/14 seconds	13/17 seconds	19/26 seconds
Power source	12 volt DC battery	12 volt DC battery	12 volt DC battery
Weight	770 lbs (310kg)	815 lbs (350kg)	848 lbs (370kg)

Specifications	S3010E
Max. working height	15' 11" (5.1m)
Max. platform height	9' 11" (3.1m)
Overall length	49.6" (1.26m)
Overall width	30.3" (0.77m)
Stowed height	5' 11" (1.82m)
Ground clearance	2.3" (58mm)
Platform capacity	500 lbs (227kg)
Inside turning radius	0" (0mm)
Gradeability	25%
Weight	1,091 lbs (495kg)

## SCISSOR LIFTS

### Battery Electric Slab



S3219E

S4732E

#### Features:

- Self-propelled electric slab scissor lifts
- Ideal for low level construction or maintenance applications
- Compact and nimble
- Easy to use and maintain

Specifications	S3215E	S3219E	S3220E
Max. working height	21' (6.6m)	25' (7.79m)	26' (8.1m)
Max. platform height	15' (4.6m)	19' (5.79m)	20' (6.1m)
Overall length	70.2" (1.78m)	70.2" (1.78m)	90.6" (2.3m)
Overall width	32" (0.81m)	32" (0.81m)	32" (0.81m)
Stowed height	75.25" (1.91m)	78.75" (2.0m)	83" (2.11m)
Ground clearance	2.5" (70mm)	2.5" (70mm)	3" (95mm)
Platform capacity	600 lbs (272kg)	550 lbs (250kg)	900 lbs (408kg)
Inside turning radius	4" (0.1m)	4" (0.1m)	30" (0.76m)
Gradeability	25%	25%	25%
Weight	2,730 lbs (1,238kg)*	2,900 lbs (1,318kg)	4,500 lbs (2,046kg)*

\*Preliminary weight - confirm at time of ordering.

Specifications	S3226E	S4726E	S4732E
Max. working height	32' (9.9m)	32' (9.9m)	38' (11.8m)
Max. platform height	26' (7.9m)	26' (7.9m)	32' (9.8m)
Overall length	90.6" (2.3m)	90.6" (2.3m)	90.6" (2.3m)
Overall width	32" (0.81m)	47" (1.21m)	47" (1.21m)
Stowed height	90.5" (2.3m)	90.5" (2.3m)	95" (2.39m)
Ground clearance	3" (95mm)	3" (95mm)	3" (95mm)
Platform capacity	500 lbs (227kg)	1,000 lbs (454kg)	700 lbs (317kg)
Inside turning radius	30" (0.76m)	10" (0.53m)	10" (0.53m)
Gradeability	25%	25%	25%
Weight	5,000 lbs (2,273kg)	4,400 lbs (1,993kg)	5,550 lbs (2,470kg)

## SCISSOR LIFTS

### Internal Combustion Rough Terrain



S2770RT

S3370RT

#### Features:

- Compact, rough terrain scissor lifts
- Excellent 4-wheel drive performance
- Roll-out deck extension for improved reach
- Bi-Energy (BE) version available with non-marking tires

Specifications	S2770RT	S3370RT	S3970RT
Max. working height	33' (10.28m)	39' (12.1m)	45' (13.5m)
Max. platform height	27' (8.28m)	33' (10.1m)	39' (11.5m)
Overall length	11' (3.36m)	11' (3.36m)	11' (3.36m)
Overall width	5' 10" (1.8m)	5' 10" (1.8m)	5' 10" (1.8m)
Stowed height	8' 6" (2.56m)	9' (2.7m)	9' 8" (2.95m)
Ground clearance	13" (200mm)	13" (200mm)	13" (200mm)
Platform capacity	1,250 lbs (580kg)	1,000 lbs (450kg)	771 lbs (350kg)
Inside turning radius	8" (2.38m)	8" (2.38m)	8" (2.38m)
Gradeability	35%	35%	30%
Weight	6,172 lbs (2,800kg)	7,980 lbs (3,620kg)	8,355 lbs (3,790kg)

Specifications	S2770BE	S3370BE	S3970BE
Max. working height	33' (10.28m)	39' (11.7m)	45' (13.5m)
Max. platform height	27' (8.28m)	33' (10.1m)	39' (11.5m)
Overall length	11' (3.36m)	11' (3.36m)	11' (3.36m)
Overall width	5' 10" (1.18m)	5' 10" (1.78m)	5' 10" (1.78m)
Stowed height	8' 6" (2.56m)	9' (2.75m)	9' 8" (2.91m)
Ground clearance	13" (200mm)	13" (200mm)	13" (200mm)
Platform capacity	1,250 lbs (580kg)	1,000 lbs (450kg)	771 lbs (350kg)
Inside turning radius	8" (2.38m)	8" (2.38m)	8" (2.38m)
Gradeability (engine)	35%	30%	30%
Weight	6,834 lbs (3,099kg)	8,642 lbs (3,920kg)	9,017 lbs (4,090kg)

## SCISSOR LIFTS

### Internal Combustion Rough Terrain



SL26SL

SL30SL

#### Features:

- Innovative 'Speed Level' lift
- Auto-levels without the need for outriggers
- Powerful 4-wheel drive for superb rough terrain capability
- Ideal for construction applications or working on compound slopes

Specifications	SL26SL
Max. working height	31' 6" (10.0m)
Max. platform height	25' 6" (8.0m)
Overall length	12' 5" (3.79m)
Overall width	7' (2.13m)
Stowed height	8' 6" (2.6m)
Ground clearance (axle)	7.6" (200mm)
Platform capacity	1,500 lbs (680kg)
Inside turning radius	12' 10" (3.9m)
Gradeability	50%
Weight	7,053 lbs (3,200kg)

Specifications	SL30SL
Max. working height	35' 4" (11.0m)
Max. platform height	29' 4" (9.0m)
Overall length	14' 1" (4.39m)
Overall width	7' (2.13m)
Stowed height	8' 6" (2.6m)
Ground clearance (axle)	7.6" (200mm)
Platform capacity	1,300 lbs (590kg)
Inside turning radius	12' 10" (3.9m)
Gradeability	50%
Weight	7,495 lbs (3,400kg)

## MAST LIFTS

### Self-Propelled



TM12

MB26J

#### Features:

- Versatile electric mast lifts
- Ideal for multiple applications including retail, stockpicking & maintenance
- Highly maneuverable for use in confined spaces
- Easy to use and maintain

Specifications	TM12
Max. working height	17' 11" (5.6m)
Max. platform height	11' 11" (3.6m)
Overall length	4' 5" (1.39m)
Overall width	2' 6" (0.76m)
Stowed height	5' 4" (1.65m)
Ground clearance	3" (66mm)
Platform capacity	500 lbs (227kg)
Inside turning radius	14.4" (0.43m)
Gradeability	25%
Weight	1,830 lbs (830kg)

Specifications	MB20J	MB26J
Max. working height	26' (8.1m)	31' 6" (9.8m)
Max. platform height	20' (6.1m)	25' 6" (7.8m)
Overall length	7' 11" (2.43m)	9' 2" (2.8m)
Overall width	31" (0.81m)	39" (1.0m)
Stowed height	6' 6" (1.98m)	6' 6" (1.98m)
Platform capacity	425 lbs (215kg)	475 lbs (215kg)
Jib length / arc	3' 4" (1.02m) / 130°	4' 7" (1.4m) / 130°
Inside turning radius	11" (0.3m)	11" (0.3m)
Gradeability	25%	25%
Weight	6,675 lbs (2,990kg)	7,000 lbs (2,660kg)

## MAST LIFTS

### Push Around



UL25

UL32

#### Features:

- Easy to use push around mast lifts
- Patented Girder Lock mast design for stable working up to 46' (14.4m)
- Compact dimensions
- Passes easily through a standard doorway using built-in tilt-back system

Specifications	UL25	UL32
Max. working height	30' 11" (9.6m)	37' 9" (11.7m)
Max. platform height	24' 11" (7.6m)	31' 9" (9.7m)
Overall length	4' 2" (1.26m)	4' 4" (1.32m)
Overall width	2' 5" (0.74m)	2' 5" (0.74m)
Stowed height	6' 6" (1.99m)	8' 3" (2.53m)
Outrigger footprint	6' 10" x 6' 6" (2.06m x 1.99m)	6' 10" x 6' 6" (2.06m x 1.99m)
Platform capacity	350 lbs (159kg)	300 lbs (136kg)
Max. wind speed	0m/s	0m/s
Weight (AC)	859 lbs (390kg)	959 lbs (435kg)
Weight (DC)	926 lbs (420kg)	1,025 lbs (465kg)

Specifications	UL40
Max. working height	46' (14.4m)
Max. platform height	40' (12.4m)
Overall length	4' 4" (1.32m)
Overall width	2' 5" (0.74m)
Stowed height	9' 6" (2.90m)
Outrigger footprint	9' 8" x 9' 4" (2.95m x 2.85m)
Platform capacity	300 lbs (136kg)
Max. wind speed	0m/s
Weight (AC)	1,036 lbs (470kg)
Weight (DC)	1,102 lbs (500kg)

## ARTICULATING BOOM LIFTS

### Battery Electric



A38E

A46JE

#### Features:

- Class leading electric articulating boom lifts
- Highly maneuverable with smooth proportional controls
- Superb working envelope with zero tailswing
- Suitable for indoor and outdoor use

Specifications	A38E
Max. working height	43' 7" (13.5m)
Max. platform height	37' 7" (11.5m)
Max. horizontal reach	18' 4" (5.9m)
Overall length	13' 4.8" (4.1m)
Overall width	4' 11" (1.51m)
Stowed height	6' 8" (2.0m)
Platform capacity	475 lbs (215kg)
Inside turning radius	3' 8" (1.12m)
Gradeability	36%
Weight	9,140 lbs (4,155kg)

Specifications	A46JE
Max. working height	52' 3" (16.0m)
Max. platform height	46' 3" (14.0m)
Max. horizontal reach	24' 11" (7.85m)
Jib length / arc	5' (1.6m) / 140°
Platform capacity	500 lbs (227kg)
Overall width	5' 8" (1.7m)
Platform capacity	500 lbs (227kg)
Inside turning radius	2' (0.61m)
Gradeability	30%
Weight	15,100 lbs (6,850kg)

## ARTICULATING BOOM LIFTS

### Internal Combustion Rough Terrain



A46JRT

AB60J

#### Features:

- Robust and reliable diesel rough terrain articulating boom lifts
- Powerful 4-wheel drive for superb rough terrain capability
- Simple to operate and maintain
- Ideal for both maintenance and construction applications

Specifications	A46JRT	AB60J
Max. working height	52' 11" (16.3m)	66' (20.3m)
Max. platform height	46' 11" (14.3m)	60' (18.3m)
Max. horizontal reach	24' 11" (7.85m)	43' 1" (13.1m)
Jib length / arc	5' (1.6m) / 140°	6' (1.8m) / 75°
Platform capacity	500 lbs (227kg)	500 lbs (227kg)
Overall width	6' 10" (2.1m)	29' 2" (8.89m)
Stowed height	7' 2" (2.25m)	8' 3" (2.57m)
Gradeability	40%	20%
Weight	16,330 lbs (7,423kg)	24,800 lbs (11,249kg)

Specifications	AB80J	AB85J
Max. working height	85' 11" (26.3m)	90' 6" (27.7m)
Max. platform height	79' 11" (24.3m)	84' 6" (25.7m)
Max. horizontal reach	59' 5" (18.1m)	61' 11" (18.8m)
Jib length / arc	5' (1.5m) / 140° (+70°/-70°)	6' 6" (2.0m) / 135° (+70°/-65°)
Platform capacity	500 lbs (227kg)	500 lbs (227kg)
Overall length	32' 2" (9.8m)	41' 2" (12.5m)
Overall width	8' 6" (2.6m)	8' 6" (2.6m)
Stowed height	9' 10" (2.9m)	9' 10" (2.9m)
Gradeability	40%	40%
Weight	36,800 lbs (16,730kg)	38,580 lbs (17,500kg)





**WWW.BACKYARD.COM.AR**